



Emergency Response

Operational Monitoring, Incident Response and Situational Awareness for First Responder Organisations



James Wetherall
Group Manager, Emergency Services

james.wetherall@trapezegroup.com.au

About Trapeze

Panel Title

98 - Transportation Solutions Software

Panel Title

12 - Operations Globally

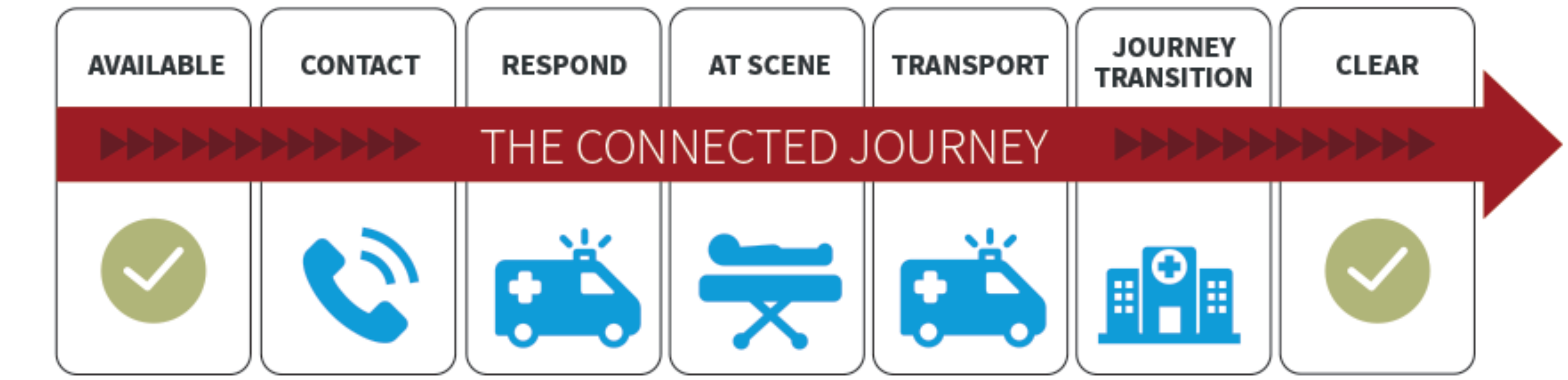
Panel Title

85 - Here for The Journey





Emergency Services – Incident Response



Emergency Services – Incident Response



Emergency Services – Incident Response



Emergency Services – Incident Response



The Data Environment



Key Components

Postgres / PostGIS

MS SQL Server

Custom Messaging
Protocols

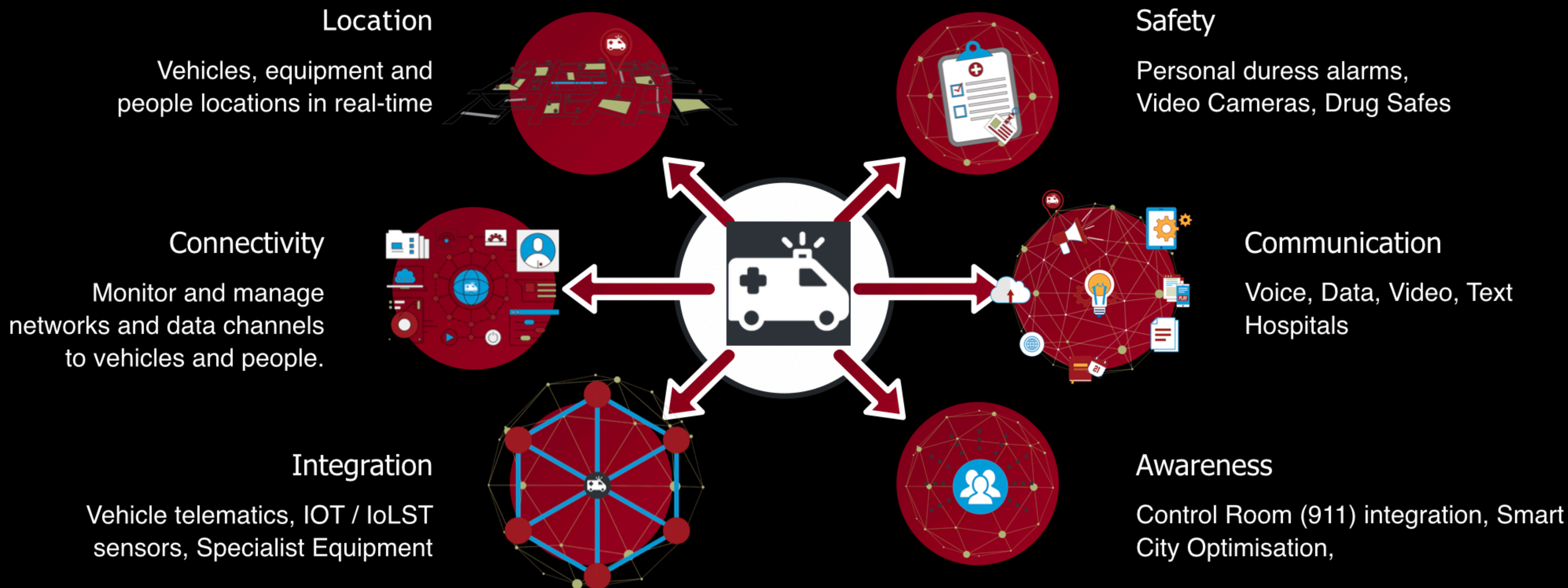
Custom Message Queue

1000+ vehicles

60+ message and
telemetry channels

24/7/365 uptime

120M + Messages / day



Location

Vehicles, equipment and
people locations in real-time



Connectivity



Connectivity

Monitor and manage
networks and data channels
to vehicles and people.



Integration

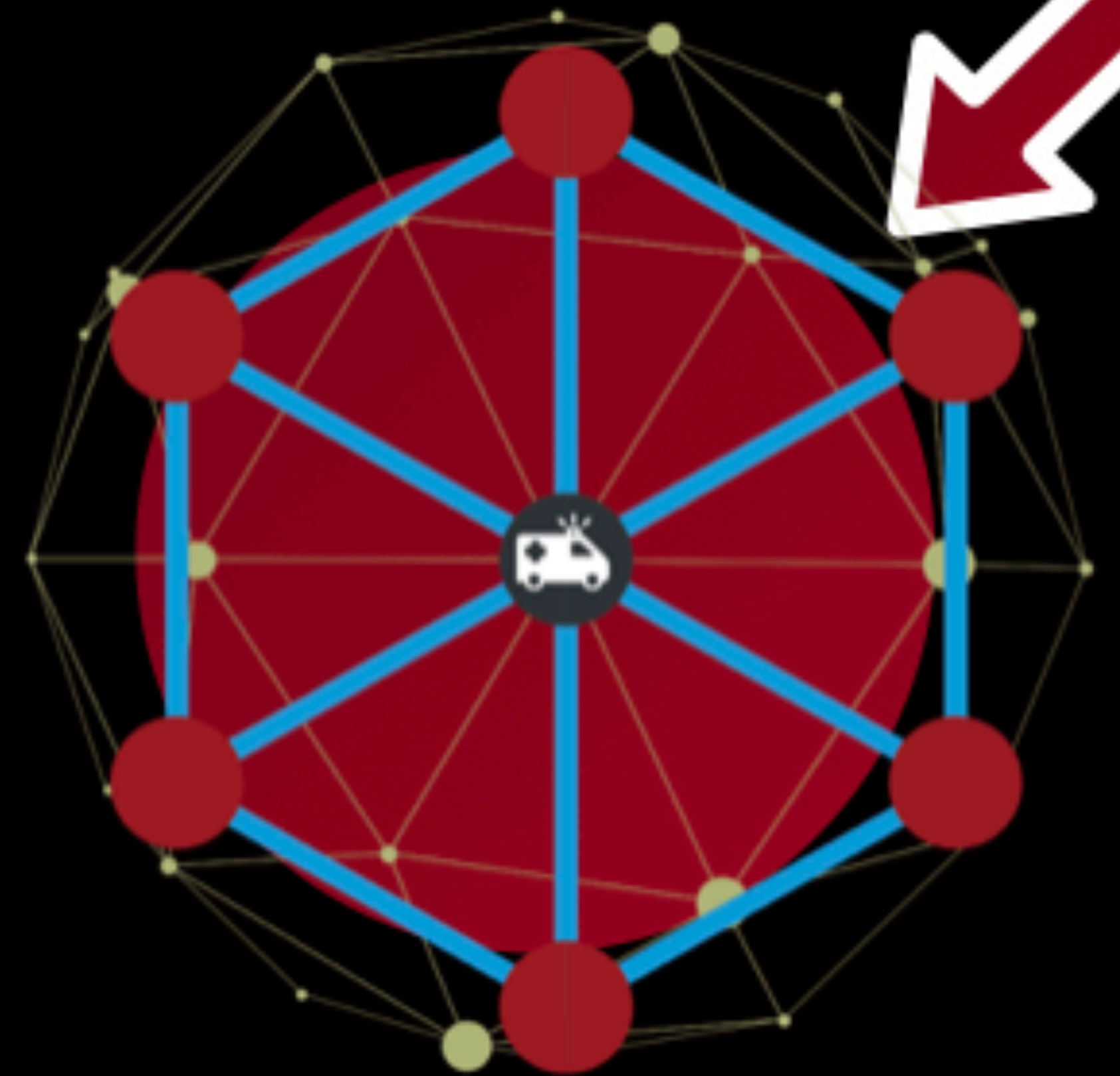
Vehicle telematics, IOT / IoLST



works and data channels
to vehicles and people.

Integration

Vehicle telematics, IOT / IoLST
sensors, Specialist Equipment



Voice, Data, Video, Text
Hospitals



Awareness

Control Room (911) integration, Smart
City Optimisation,

Video Cameras, Drug Safes



Communication

Voice, Data, Video, Text
Hospitals

Awareness

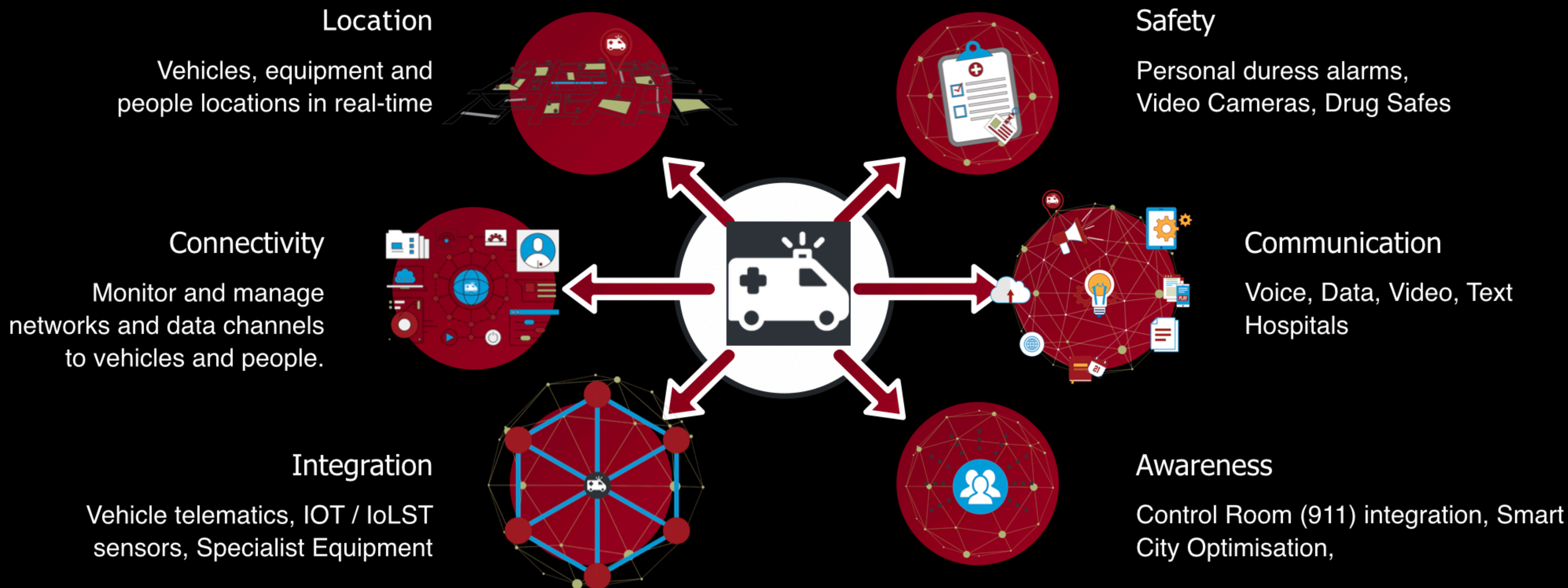


Safety

Personal duress alarms,
Video Cameras, Drug Safes



Communication



Our Key Learnings



Our Journey

Bespoke
Development

Node
Angular
React
ASP.NET
Web Bootstraps

Our Journey

Bespoke Development

Node
Angular
React
ASP.NET
Web Bootstraps

BI Tools / “COTS” Solutions

Power BI
Tableau
PRTG Monitoring
Boutique COTS
Solutions
Cognos
Excel / Access

Our Journey

Bespoke
Development

Node
Angular
React
ASP.NET
Web Bootstraps

BI Tools / "COTS"
Solutions

Power BI
Tableau
PRTG Monitoring
Boutique COTS
Solutions
Cognos
Excel / Access



Our Journey

Bespoke
Development

Node
Angular
React
ASP.NET
Web Bootstraps

BI Tools / "COTS"
Solutions

Power BI
Tableau
PRTG Monitoring
Boutique COTS
Solutions
Cognos
Excel / Access



Delivery in
Minutes, not
Weeks

Real-Time (or
Near..) is
fundamental

Remove
dependency on
developers

Prototype,
Prototype,
Prototype

Multiple Data
Sources are Not
an Issue -

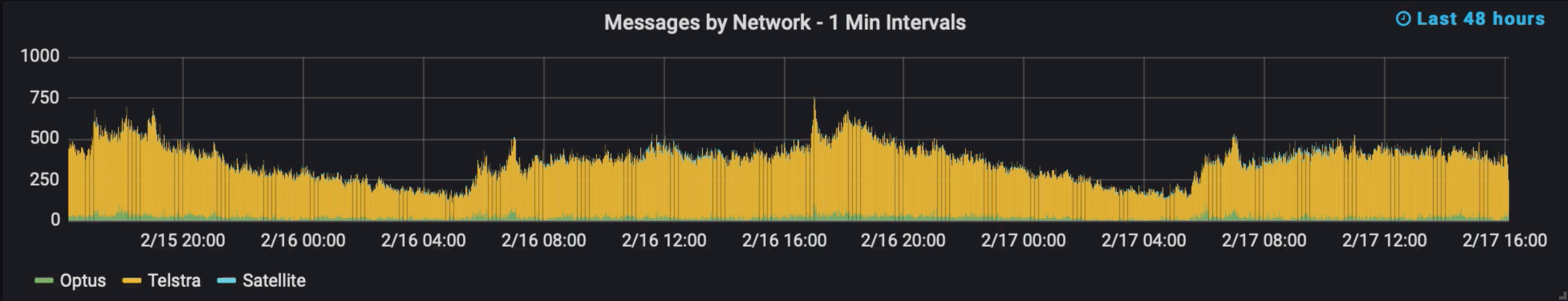
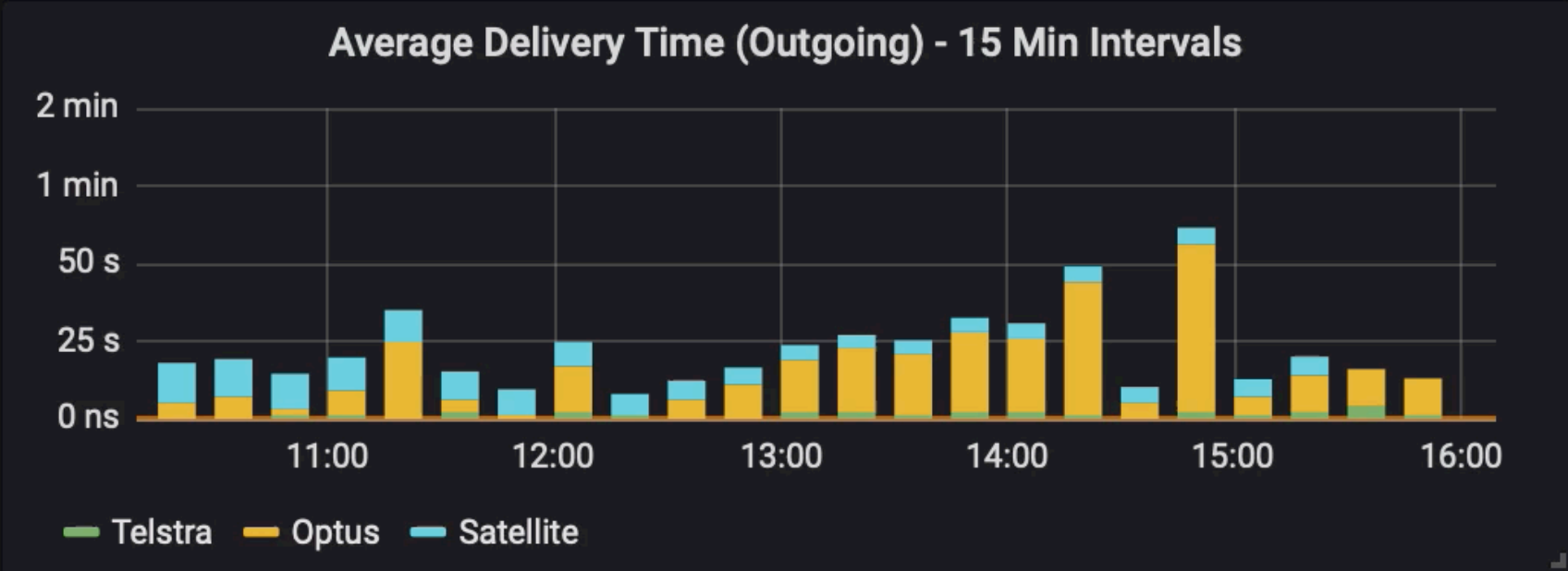
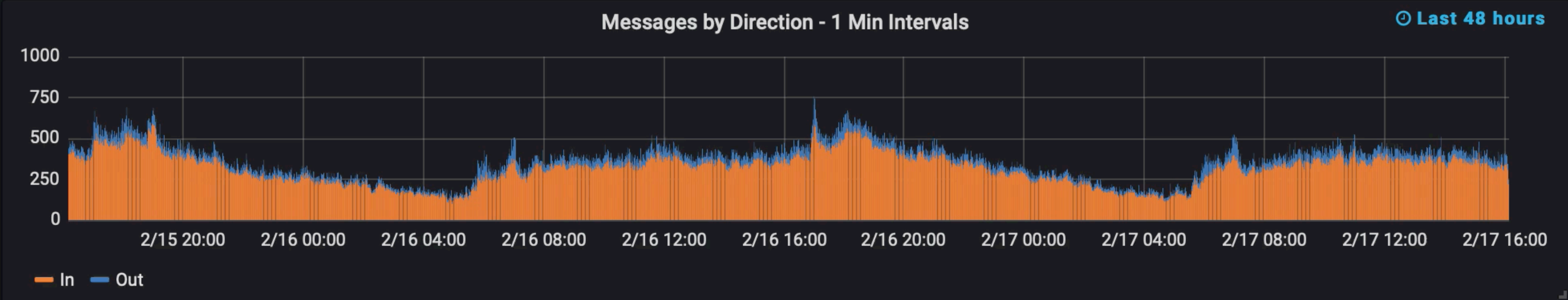
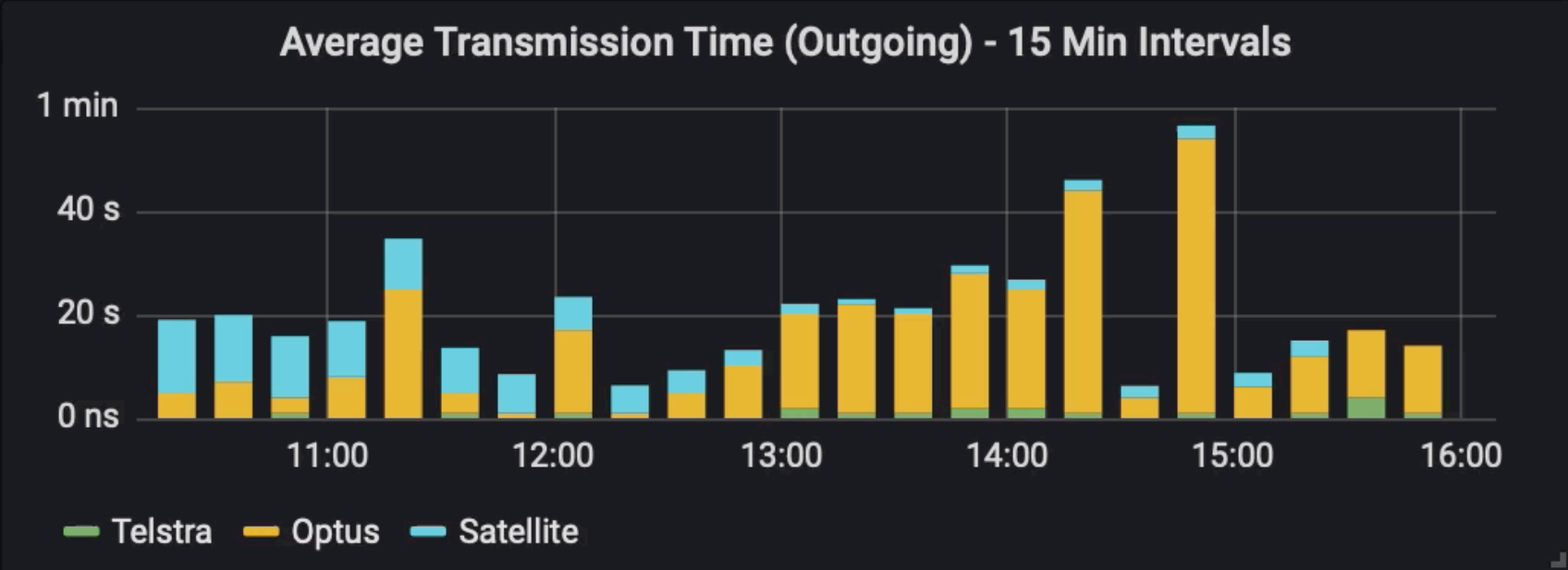
User experience
drives reporting



Must be an everyday tool!

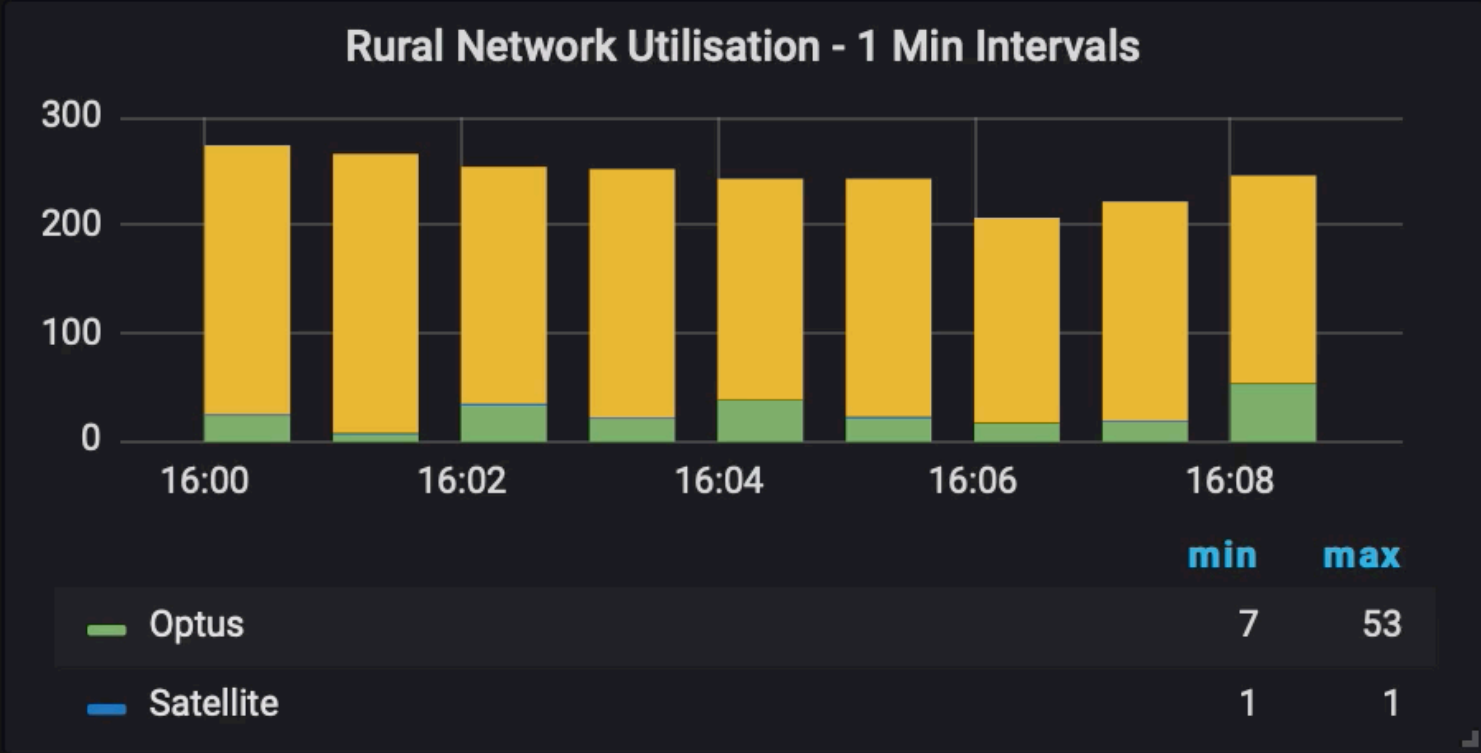
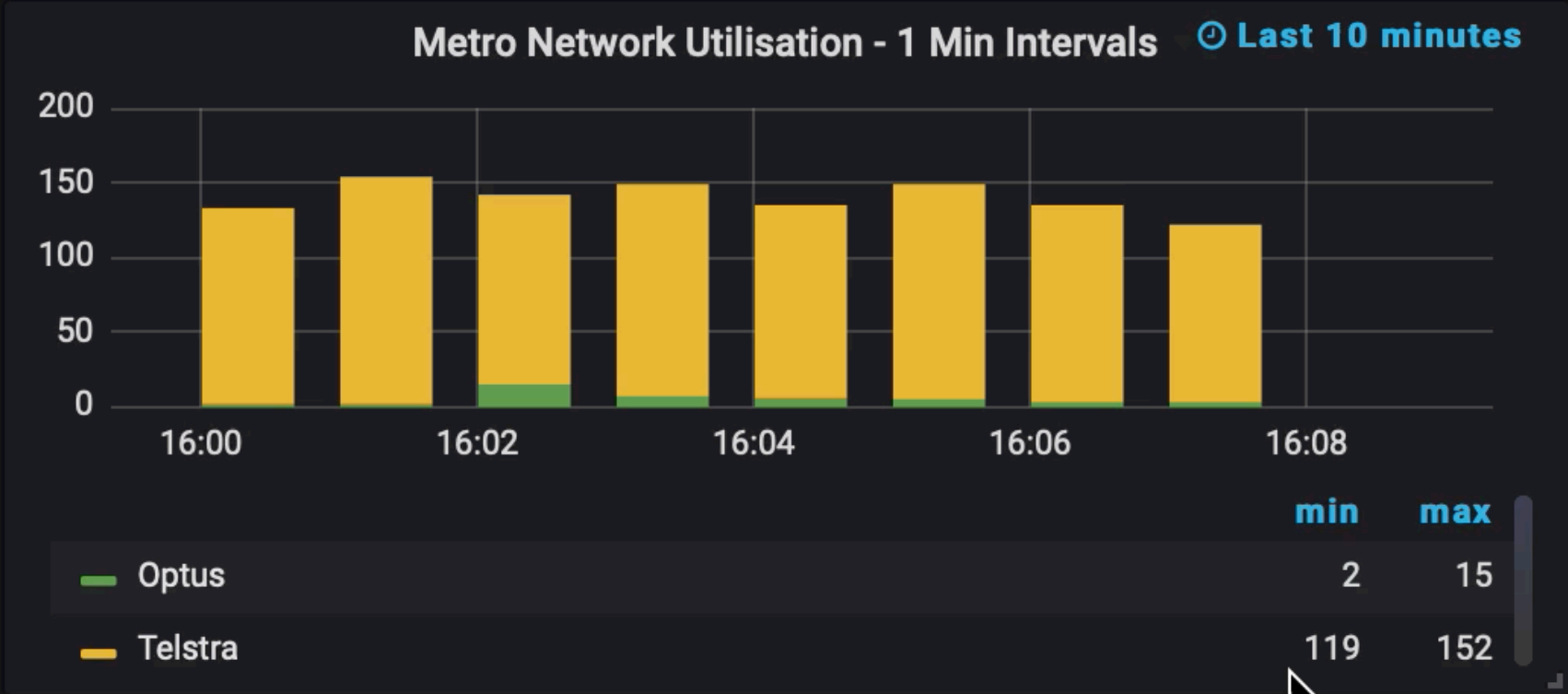
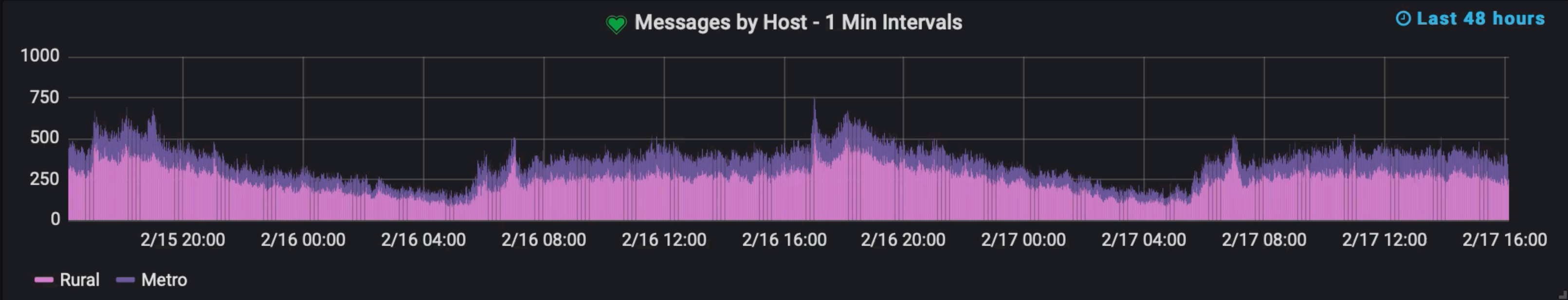
Examples

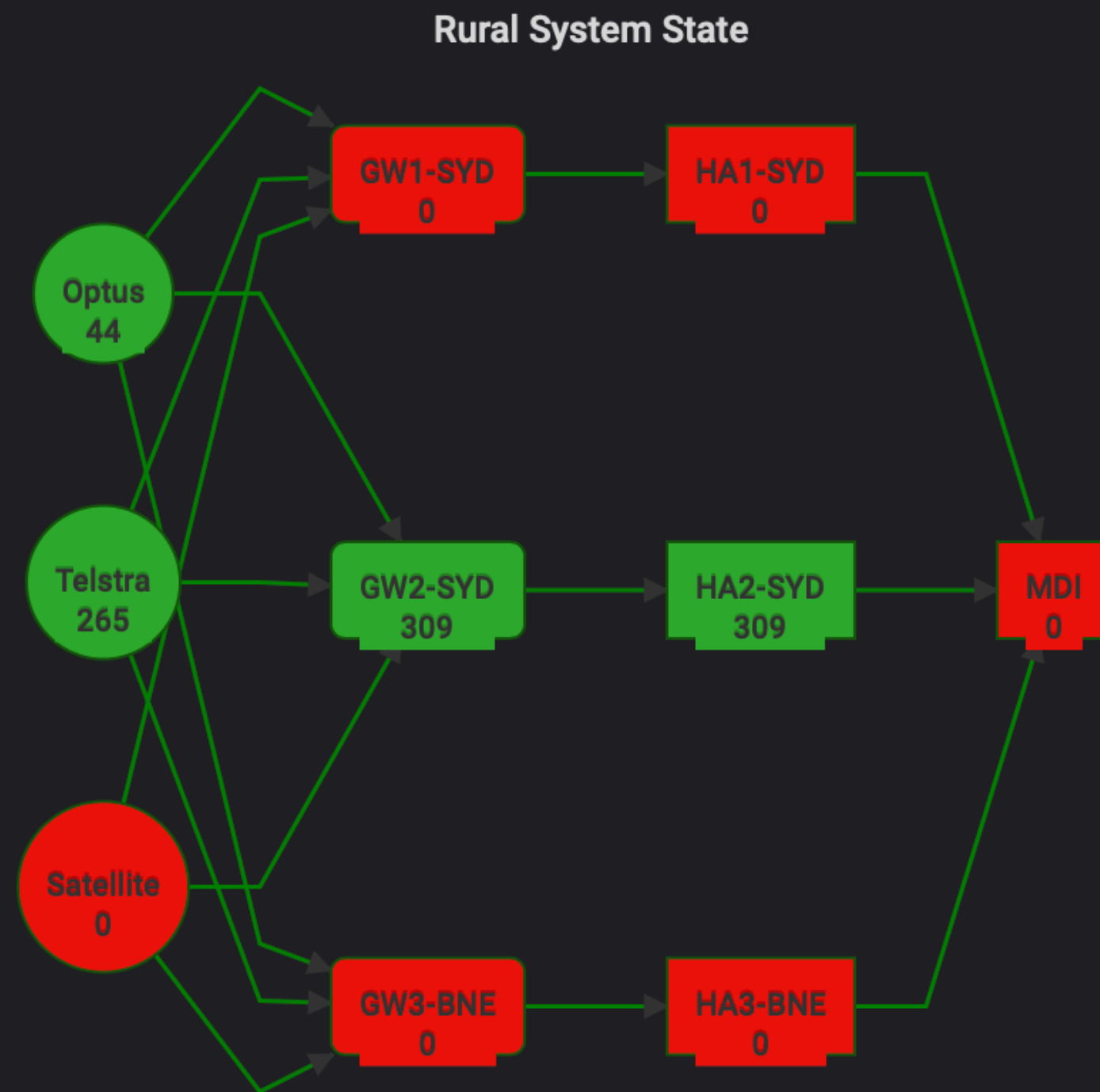




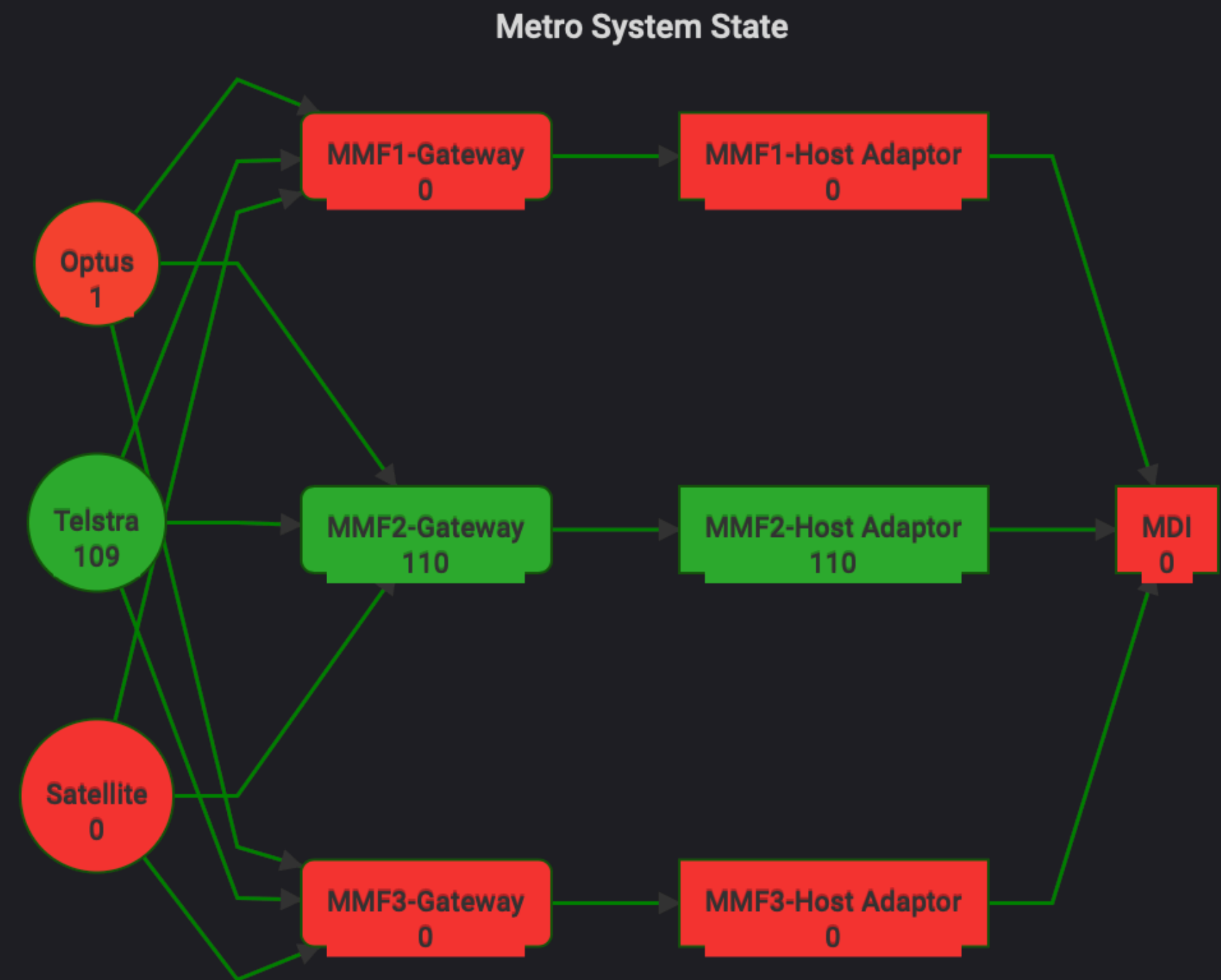
Most Recent Message Summary

datetimehour1min	host	direction	networkname	No Messages	No Vehicles
2019-02-10T06:11:00Z	Metro	In	Optus	1	1
2019-02-10T06:11:00Z	Metro	In	Telstra	90	68
2019-02-10T06:11:00Z	Metro	Out	Telstra	4	2
2019-02-10T06:11:00Z	Rural	In	Optus	6	4
2019-02-10T06:11:00Z	Rural	In	Telstra	227	120
2019-02-10T06:11:00Z	Rural	Out	Telstra	10	5





		min	max	avg	total	current
—	Optus	0	44	22	44	0
—	Telstra	0	265	132.5	265	0
—	MDI	0	0	0	0	0
—	MMF1_Gateway	0	0	0	0	0
—	MMF1_Host	0	0	0	0	0
—	MMF2_Gateway	309	309	309	309	309
—	MMF2_Host	309	309	309	309	309
—	MMF3_Gateway	0	0	0	0	0
—	MMF3_Host	0	0	0	0	0
—	Satellite	0	0	0	0	0



		min	max	avg	total	current
—	Optus	0	1	0.5	1	0
—	Telstra	0	109	54.5	109	0
—	MDI	0	0	0	0	0
—	MMF1_Gateway	0	0	0	0	0
—	MMF1_Host	0	0	0	0	0
—	MMF2_Gateway	110	110	110	110	110
—	MMF2_Host	110	110	110	110	110
—	MMF3_Gateway	0	0	0	0	0
—	MMF3_Host	0	0	0	0	0
—	Satellite	0	0	0	0	0

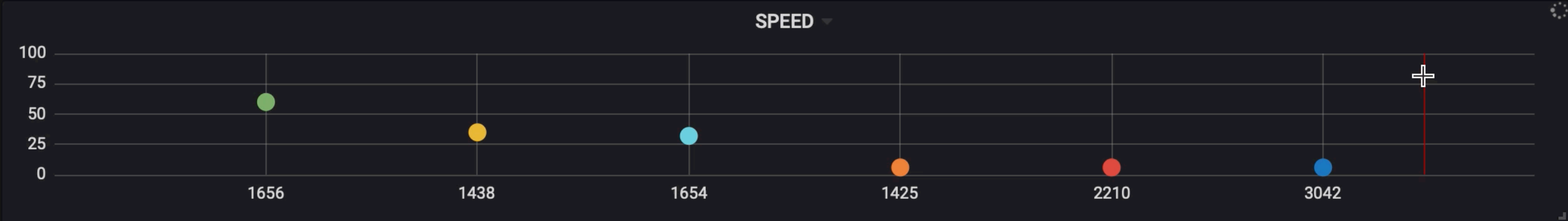
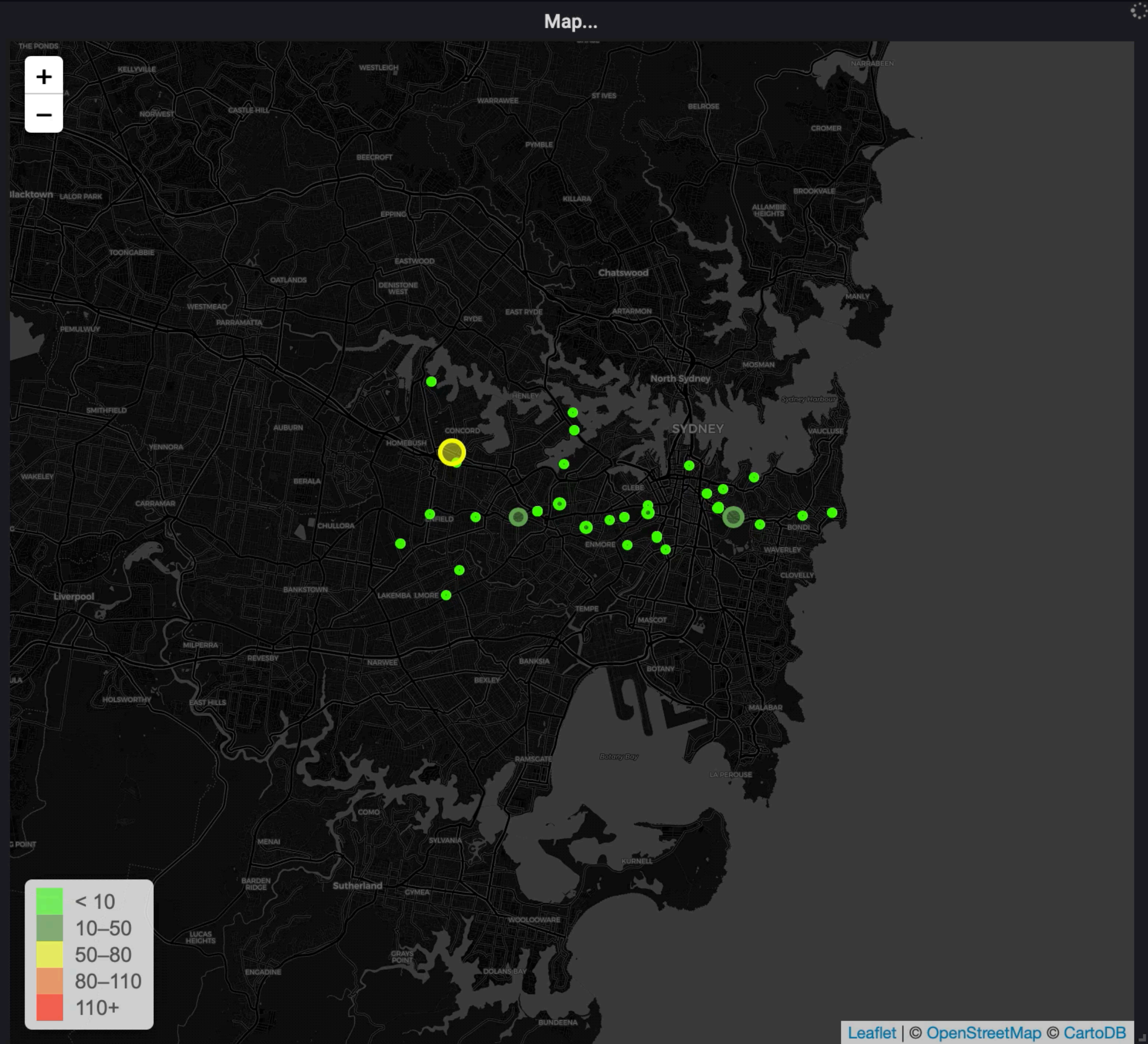
Total Vehicles

50

	total	percentage
alerted	1	2%
AT DEST	4	8%
AT SCENE	6	12%
AT STN	3	6%
AVAIL	1	2%
IN VEHICLE	1	2%
OFF DUTY	24	48%
OFF STREET	1	2%
RESPOND	5	10%
TO STN	3	6%
TRANSPORT	1	2%

CURRENT RESPONSE (MINUTES)

12.14



STATUS			
VEHICLE	JOB	STATUS	PRIORITY ▴
1659	11165	AT DEST	1B
1661	11206	AT SCENE	1C
1984	11164	AT DEST	1C
1951	11122	AT DEST	1C
3421	11110	AT SCENE	1C
1443	11151	AT SCENE	1C
1619	11229	RESPOND	2A
1436	11209	RESPOND	2A
1438	11224	RESPOND	2AE
1660	11140	AT DEST	2AE
1417	11194	AT SCENE	2B
1654	11230	RESPOND	2B
1805	11227	RESPOND	2BH
1420	11191	TRANSPORT	2_I
1422	11089	OFF STREET	2_I
1430	11208	AT SCENE	2_I
1445	11116	alerted	2_I
1649	11130	AT SCENE	2_I
1441	-	AT STN	
1656	-	TO STN	
3099	-	IN VEHICLE	
1432	-	TO STN	

PRIORITY	VEHICLES
1B	1
1C	5
2A	2
2AE	2
2B	2
2BH	1
2_I	5

SIRENS

16:25

EMERGENCY LIGHTS

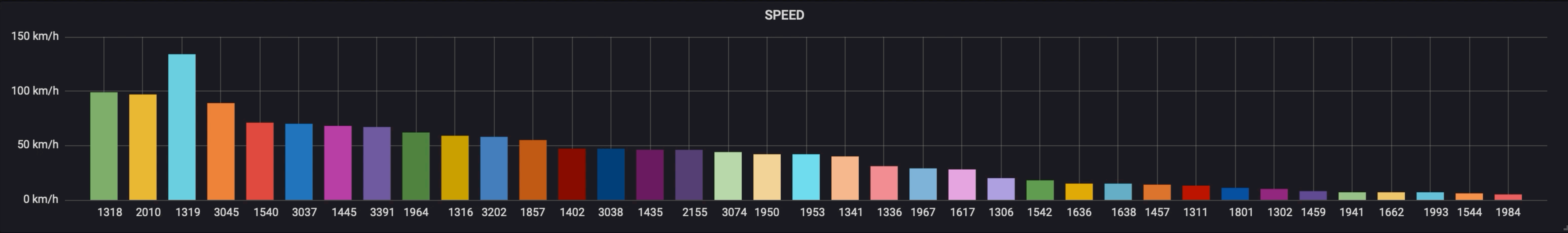
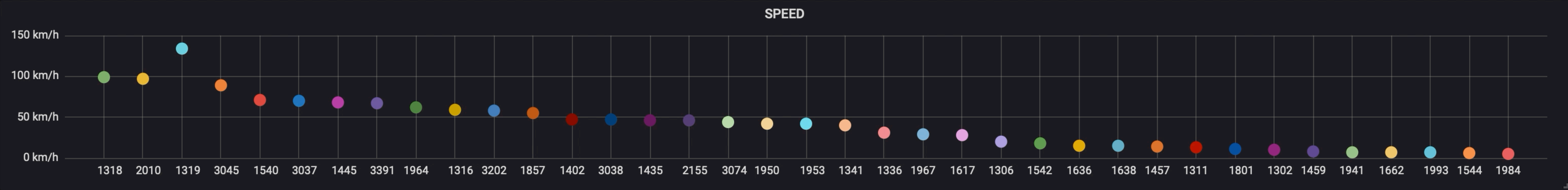
16:25

Current Max Speed

99 km/h

Current Max Speed

62 mph



Vehicle 3099

IGNITION

ON

ENGINE

PARK BRAKE

LIGHTS



SIRENS



GEAR

DOOR

CLOSED

HEADING



OUTSIDE

°C

SMART TE...

39°C

COOLANT

°C

VOLTAGE

14

SPEED SAT

66Kph

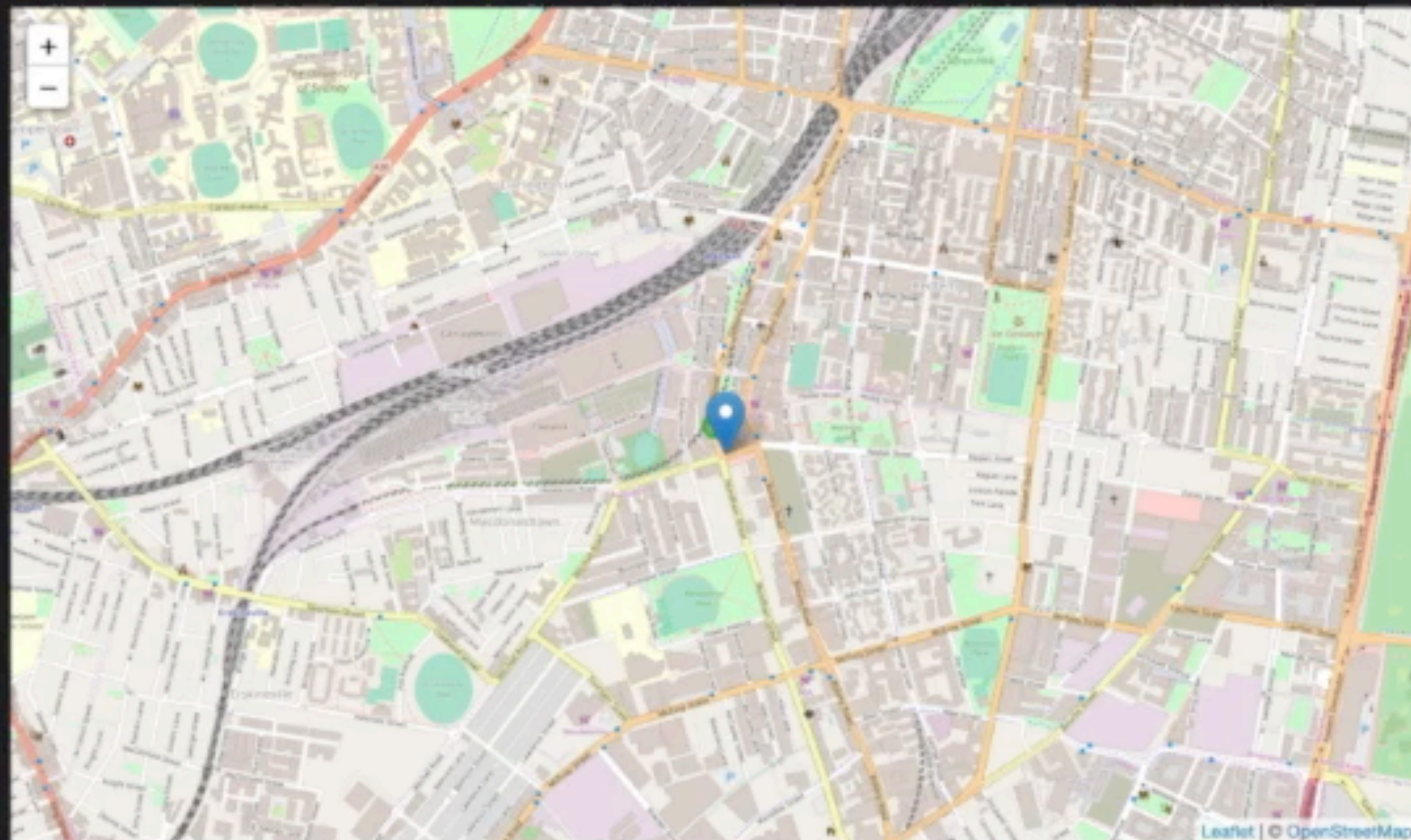
ENGINE HRS

FUEL

ODO

Navigation...

METRO - GCON > VEHICLE ROUTE > VEHICLE ROUTE >
VEHICLE ROUTE > VEHICLE TELEMETRY - GCON



SATELLITES

7

DURESS



CRASH



VEHICLE

REGO

ASSET

MAKE AND MODEL

BASE

3099

BZ64NA

A10895

HYUNDAI SANTA FE

HURSTVILLE

JOB

PRIORITY

LAST STATUS

TIME IN STA...

3099

10874

2i

19:46:5

0

RESPONDING

1436

STATUS

TRANSPORT

SIRENS

LIGHTS

SPEED

7

TEMP (OUT)

N/A

VOLTAGE

14

LAST STATUS

16:45:07

JOB

11209

MINUTES IN STATUS

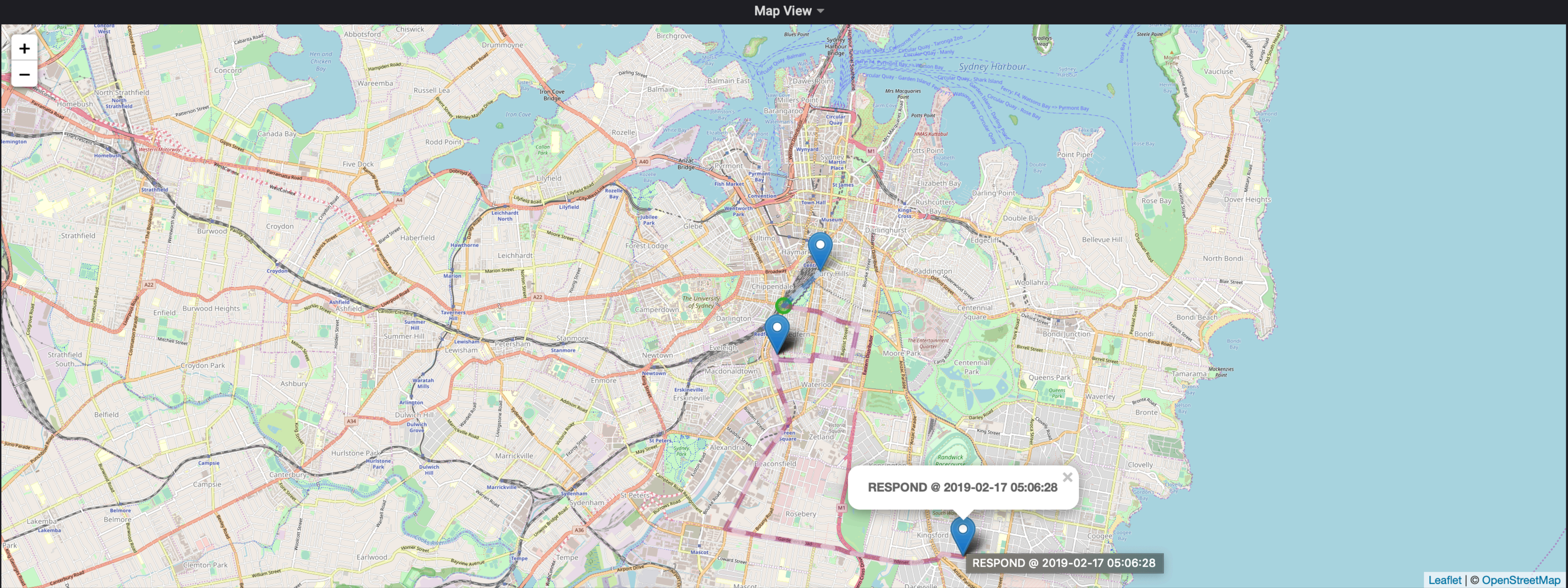
15

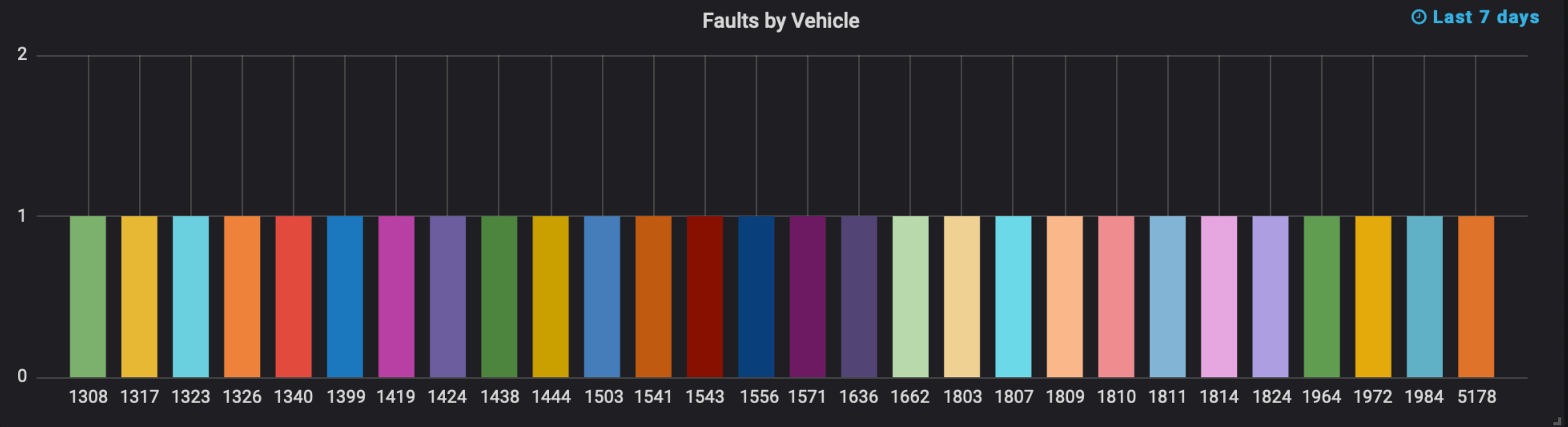
PRIORITY

2A

HEADING

←





Panel Title

⌕ Last 7 days

VehicleId	EventTimestamp	ChannelName	ChannelValue	ChannelDescription	Criticality
1340	15/02/19 10:06:30 am	CAN_Lamp_SRS_On	1.00	CAN - SRS Light Active	1
1424	16/02/19 5:17:45 pm	CAN_Lamp_Break_Wear	1.00	CAN - Break Wear Light Active	1
1438	17/02/19 8:00:58 am	CAN_Lamp_Break_Wear	1.00	CAN - Break Wear Light Active	1
1541	17/02/19 5:54:44 am	CAN_Lamp_SRS_On	1.00	CAN - SRS Light Active	1
1807	15/02/19 5:33:48 am	CAN_Lamp_SRS_On	1.00	CAN - SRS Light Active	1
1964	15/02/19 9:48:17 am	CAN_Lamp_SRS_On	1.00	CAN - SRS Light Active	1
1308	17/02/19 5:44:24 am	CAN_Lamp_License_Plate	1.00	CAN - License Plate	2
1317	14/02/19 6:20:16 pm	CAN_Lamp_License_Plate	1.00	CAN - License Plate	2
1326	13/02/19 8:52:50 pm	CAN_Lamp_Right_Low_Beam	1.00	CAN - Right Low Beam	2
1444	16/02/19 11:29:07 am	CAN_Lamp_Left_Tail_Defective	1.00	CAN - Left Tail	2
1543	16/02/19 12:39:36 am	CAN_Lamp_License_Plate	1.00	CAN - License Plate	2
1636	17/02/19 3:41:43 pm	CAN_Lamp_License_Plate	1.00	CAN - License Plate	2
1662	13/02/19 5:32:18 pm	CAN_Lamp_Right_Low_Beam	1.00	CAN - Right Low Beam	2
1803	17/02/19 6:36:17 am	CAN_Lamp_License_Plate	1.00	CAN - License Plate	2
1810	17/02/19 12:08:44 am	CAN_Lamp_License_Plate	1.00	CAN - License Plate	2
1811	17/02/19 5:02:33 pm	CAN_Lamp_License_Plate	1.00	CAN - License Plate	2
1814	17/02/19 8:22:25 am	CAN_Lamp_License_Plate	1.00	CAN - License Plate	2
1824	17/02/19 4:24:27 am	CAN_Lamp_Right_Front_Parking_Defective	1.00	CAN - Right Front Parking	2

Panel Title

⌕ Last 7 days

VehicleId	Odometer	Service Distance	time
1308	116252	24800	17/02/19 5:44:24 am
1317	152037	10700	14/02/19 6:20:16 pm
1323	57400	23800	16/02/19 6:07:59 am
1326	45013	24200	13/02/19 8:52:50 pm
1340	28322	22000	15/02/19 10:06:30 am
1399	37889	25300	16/02/19 5:52:57 pm
1419	3000	27700	17/02/19 6:10:31 am
1424	18588	12100	16/02/19 5:17:45 pm
1438	57488	11500	17/02/19 8:00:58 am
1444	46664	100	16/02/19 11:29:07 am
1503	113290	11300	17/02/19 5:15:24 pm
1541	51280	400	17/02/19 5:54:44 am
1543	72085	12000	16/02/19 12:39:36 am
1556	84150	29100	11/02/19 6:49:12 am
1571	110622	3000	17/02/19 4:44:39 pm
1636	140260	2000	17/02/19 3:41:43 pm
1662	140138	22600	13/02/19 5:32:18 pm
1803	81460	0	17/02/19 6:36:17 am

Brake Faults

6 Vehicles

Brake Faults (Last 7 Days)						
Vehicle ID	Fault	No. Faults Reported	First Fault	Last Fault	Latest Odometer	Service Dist
1335	CAN_Lamp_Break_Wear	59	2019-02-17 00:00:00	2019-02-19 00:00:00	125484	26600
1852	CAN_Lamp_Break_Wear	45	2019-02-15 00:00:00	2019-02-17 00:00:00	143505	29700
1424	CAN_Lamp_Break_Wear	13	2019-02-15 00:00:00	2019-02-19 00:00:00	18922	11700
1438	CAN_Lamp_Break_Wear	10	2019-02-16 00:00:00	2019-02-19 00:00:00	57720	10700
1350	CAN_Lamp_Break_Wear	3	2019-02-17 00:00:00	2019-02-17 00:00:00	92018	600
1437	CAN_Lamp_Break_Wear	2	2019-02-15 00:00:00	2019-02-17 00:00:00	106573	13900

ENR Faults (Suspension Pressure)

0 Vehicles

Coolant Faults

18 Vehicles

Coolant Level Faults						
Vehicle ID	Fault	No. Faults Reported	First Fault	Last Fault	Latest Odometer	Service Dist
1984	CAN_Lamp_Coolant_Level_Low	9037	2019-02-15 00:00:00	2019-02-19 00:00:00	46331	0
1445	CAN_Lamp_Coolant_Level_Low	2765	2019-02-16 00:00:00	2019-02-19 00:00:00	45924	0
1315	CAN_Lamp_Coolant_Level_Low	875	2019-02-15 00:00:00	2019-02-19 00:00:00	47410	22700
1810	CAN_Lamp_Coolant_Level_Low	29	2019-02-17 00:00:00	2019-02-19 00:00:00	133569	12300
1457	CAN_Lamp_Coolant_Level_Low	20	2019-02-15 00:00:00	2019-02-19 00:00:00	38979	11900
1655	CAN_Lamp_Coolant_Level_Low	5	2019-02-15 00:00:00	2019-02-17 00:00:00	67541	10200
1804	CAN_Lamp_Coolant_Level_Low	5	2019-02-17 00:00:00	2019-02-18 00:00:00	76885	13800

Washer Fluid

72 Vehicles

General Lamp Faults

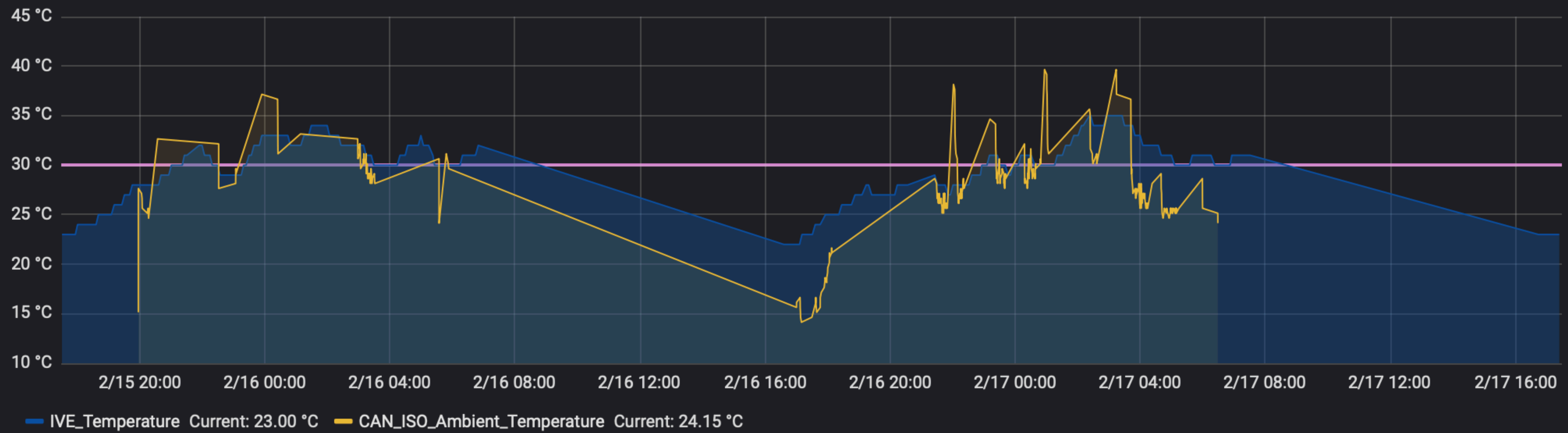
74 Vehicles

Lamp Faults Last 7 Days						
Vehicle ID	Fault	No. Faults Reported	First Fault	Last Fault	Latest Odometer	Service Dist
1809	CAN_Lamp_Left_Stop_Defective	1433	2019-02-15T00:00:00Z	2019-02-19T00:00:00Z	128587	8100
1802	CAN_Lamp_Left_Turn_Defective	381	2019-02-15T00:00:00Z	2019-02-18T00:00:00Z	125387	16200
1984	CAN_Lamp_Right_Front_Parking_Defective	101	2019-02-15T00:00:00Z	2019-02-19T00:00:00Z	46331	0
1571	CAN_Lamp_Right_Front_Parking_Defective	92	2019-02-15T00:00:00Z	2019-02-19T00:00:00Z	111378	3700
1824	CAN_Lamp_Right_Low_Beam	87	2019-02-15T00:00:00Z	2019-02-19T00:00:00Z	76895	13200

▾ I/O Channels

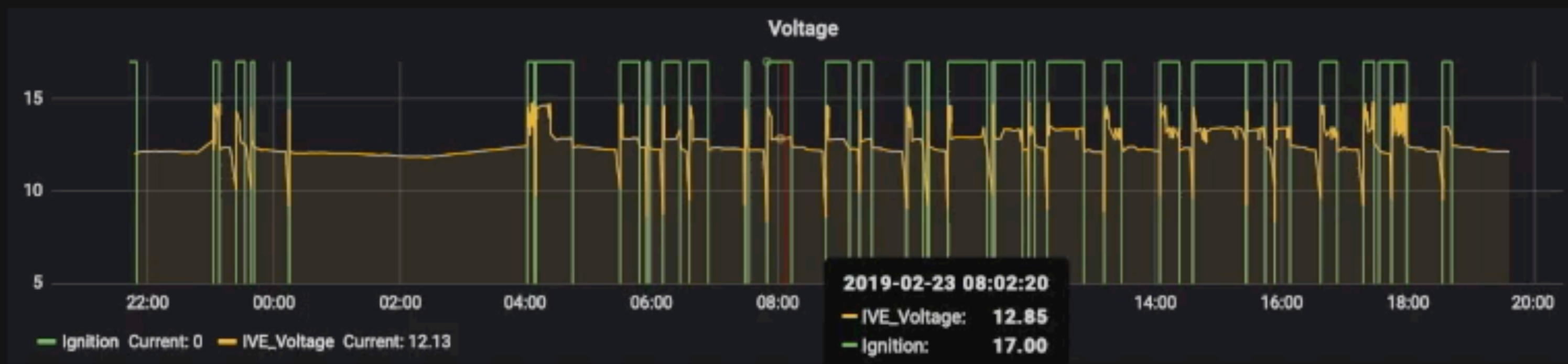
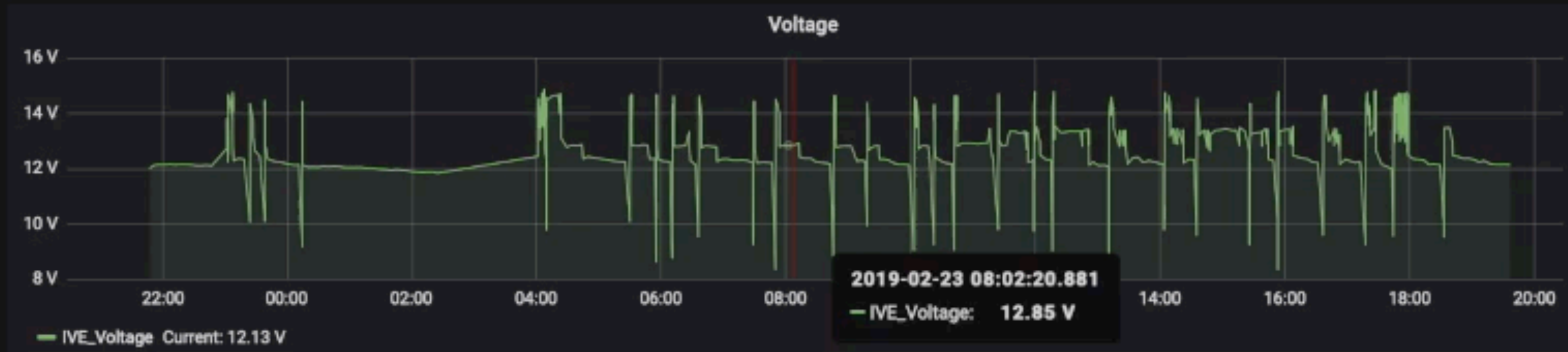
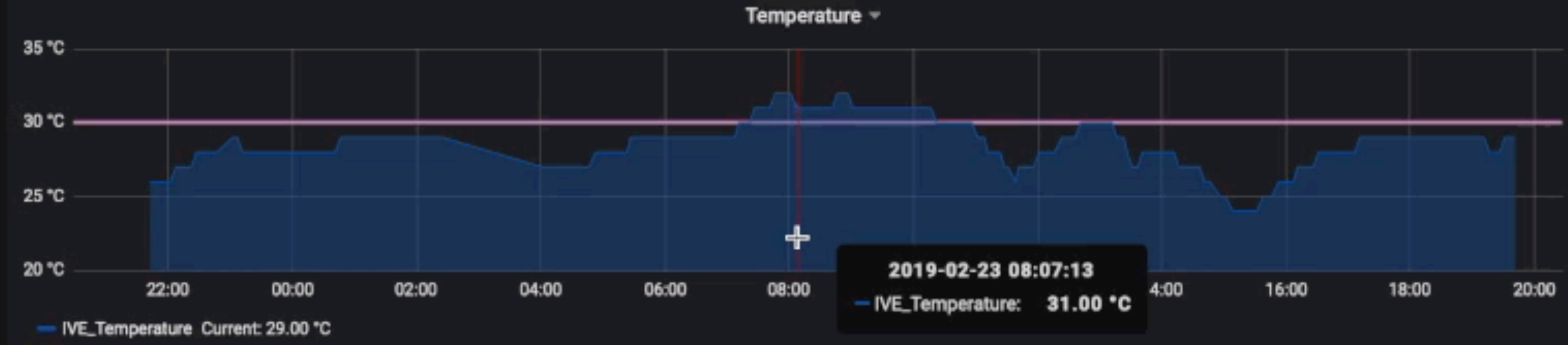
<div>CHANNEL</div> <div>25</div> <div>Ambient Temperature (CAN)</div>	<div>CHANNEL</div> <div>-</div> <div>Coolant Temperature (CAN)</div>	<div>CHANNEL</div> <div>-</div> <div>Crash</div>	<div>CHANNEL</div> <div>1</div> <div>Current Gear</div>
<div>CHANNEL</div> <div>0</div> <div>Door</div>	<div>CHANNEL</div> <div>0</div> <div>Duress</div>	<div>CHANNEL</div> <div>0</div> <div>Emergency Light Bar</div>	<div>CHANNEL</div> <div>22210</div> <div>Fuel Consumption</div>
<div>CHANNEL</div> <div>109</div> <div>Heading</div>	<div>CHANNEL</div> <div>1</div> <div>Ignition</div>	<div>CHANNEL</div> <div>1</div> <div>Modem PWR Out</div>	<div>CHANNEL</div> <div>10</div> <div>Number of Satellites</div>
<div>CHANNEL</div> <div>-</div> <div>Odometer</div>	<div>CHANNEL</div> <div>0</div> <div>Park Brake</div>	<div>CHANNEL</div> <div>-</div> <div>Retarder Active</div>	<div>CHANNEL</div> <div>1</div> <div>Screen PWR Out</div>
<div>CHANNEL</div> <div>25100</div> <div>Service Distance</div>	<div>CHANNEL</div> <div>0</div> <div>Siren</div>	<div>CHANNEL</div> <div>-</div> <div>Speed (CAN)</div>	<div>CHANNEL</div> <div>14</div> <div>Speed (SAT)</div>

Temperature



Voltage





Custom Panels

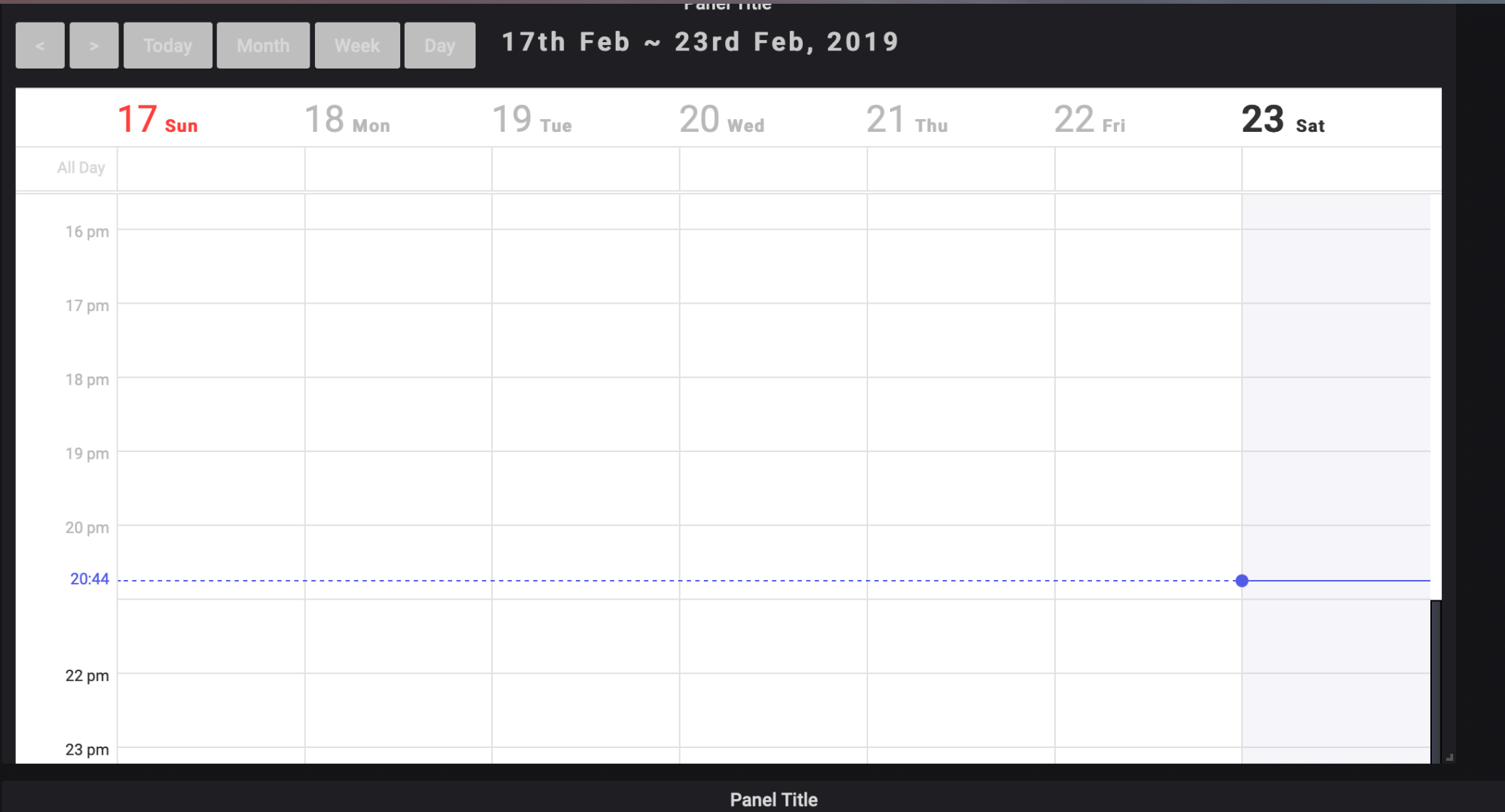
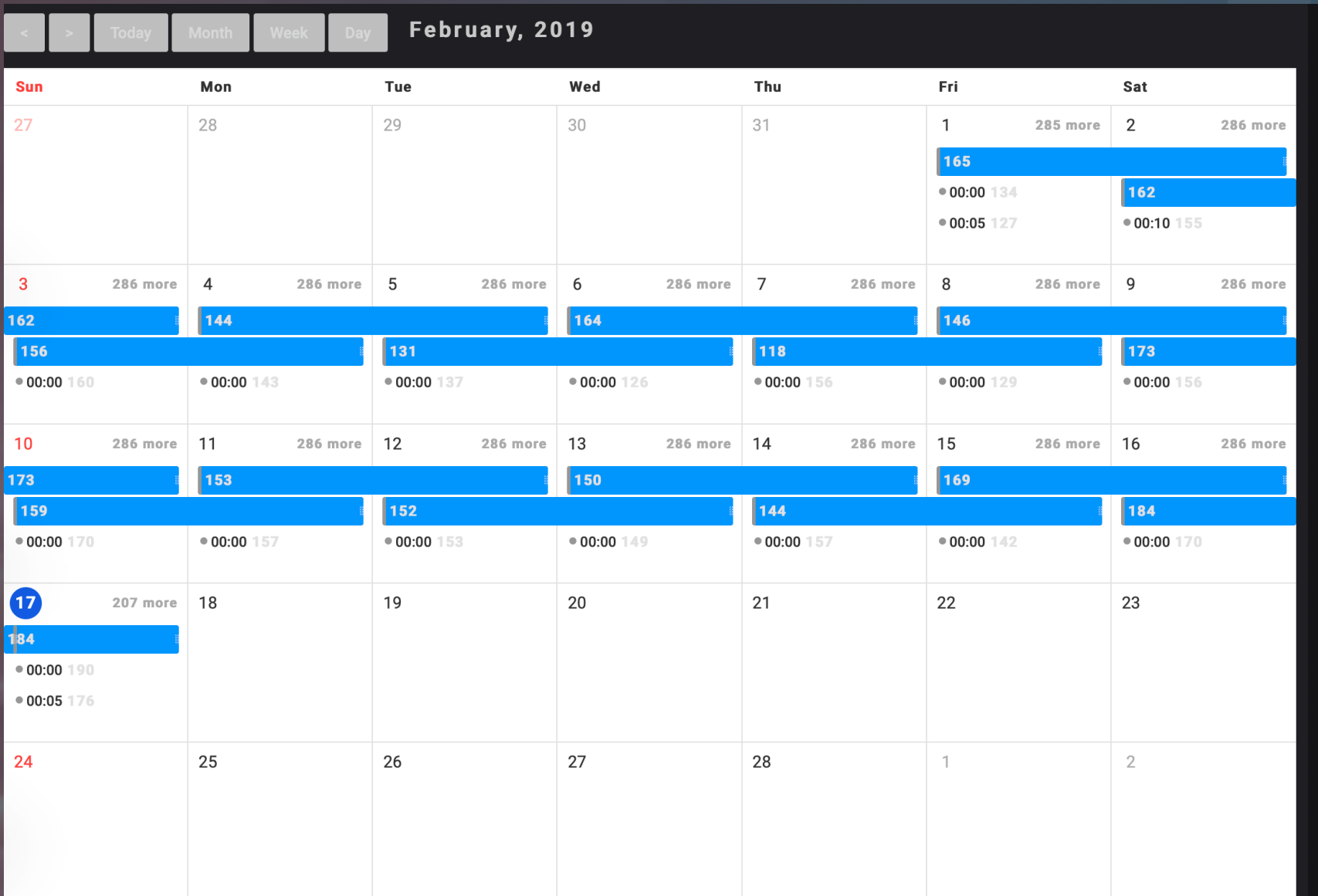


Calendar Controls with Drill Down

Simple Visual Aid for Scheduling

Time Series

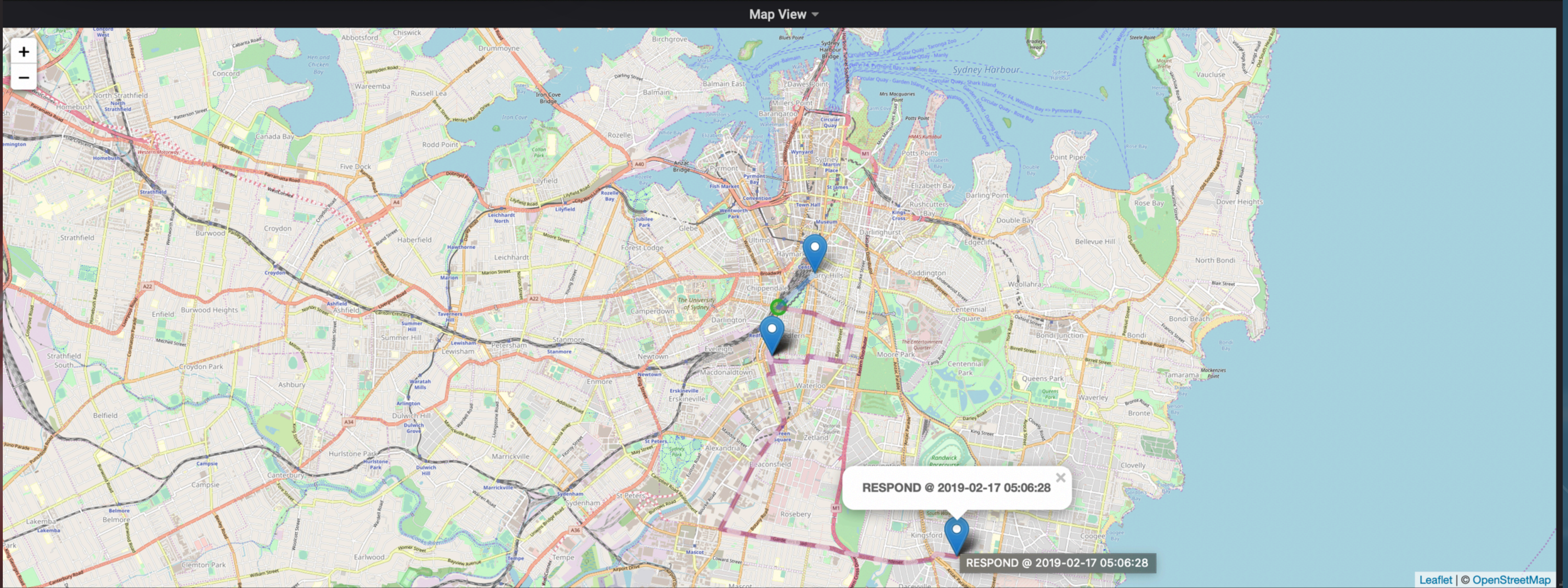
Drill up and Down



World Map

Allows Assembly of Points to Line

Display key Waypoints



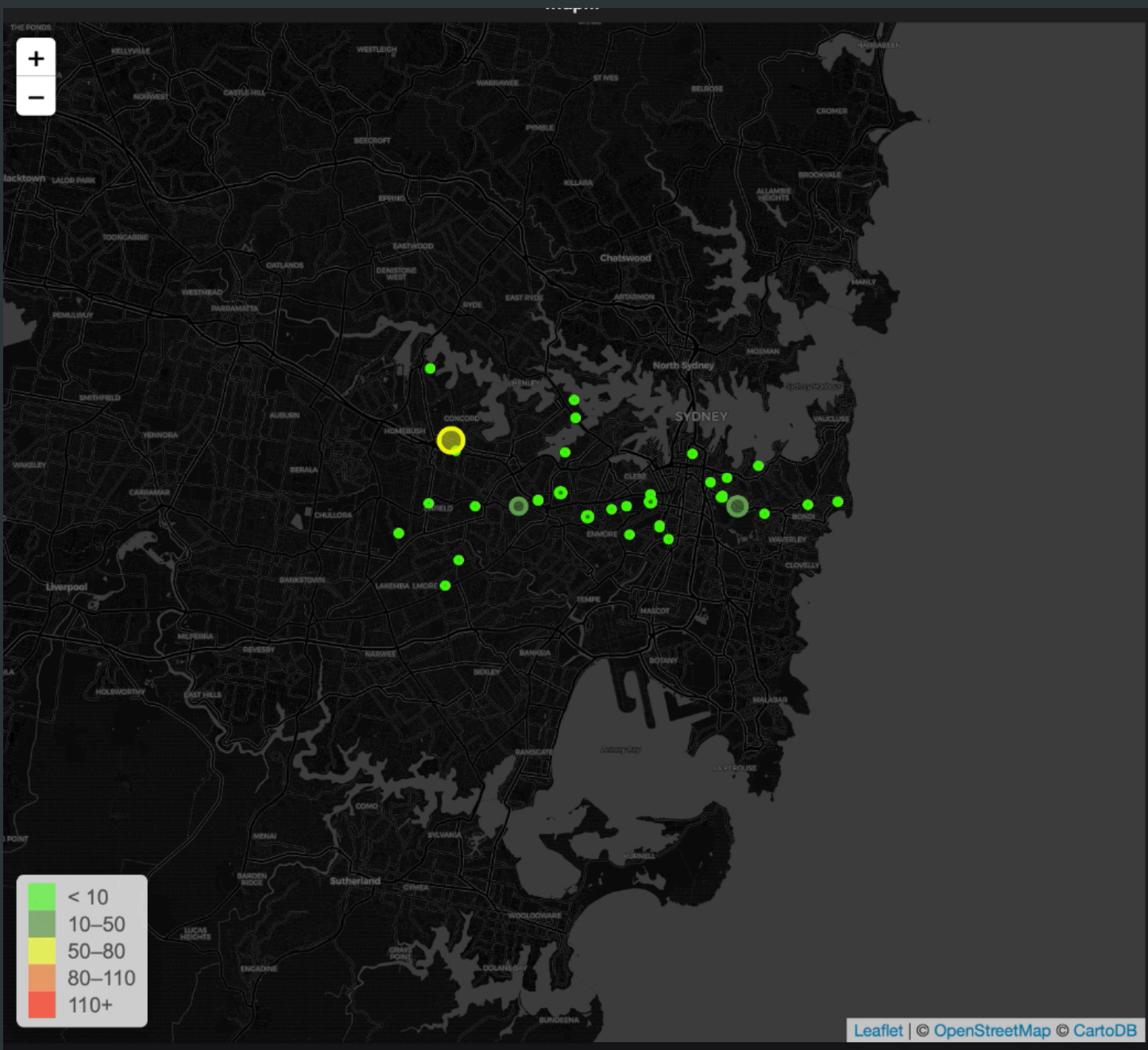
Whats Next?



Plugins

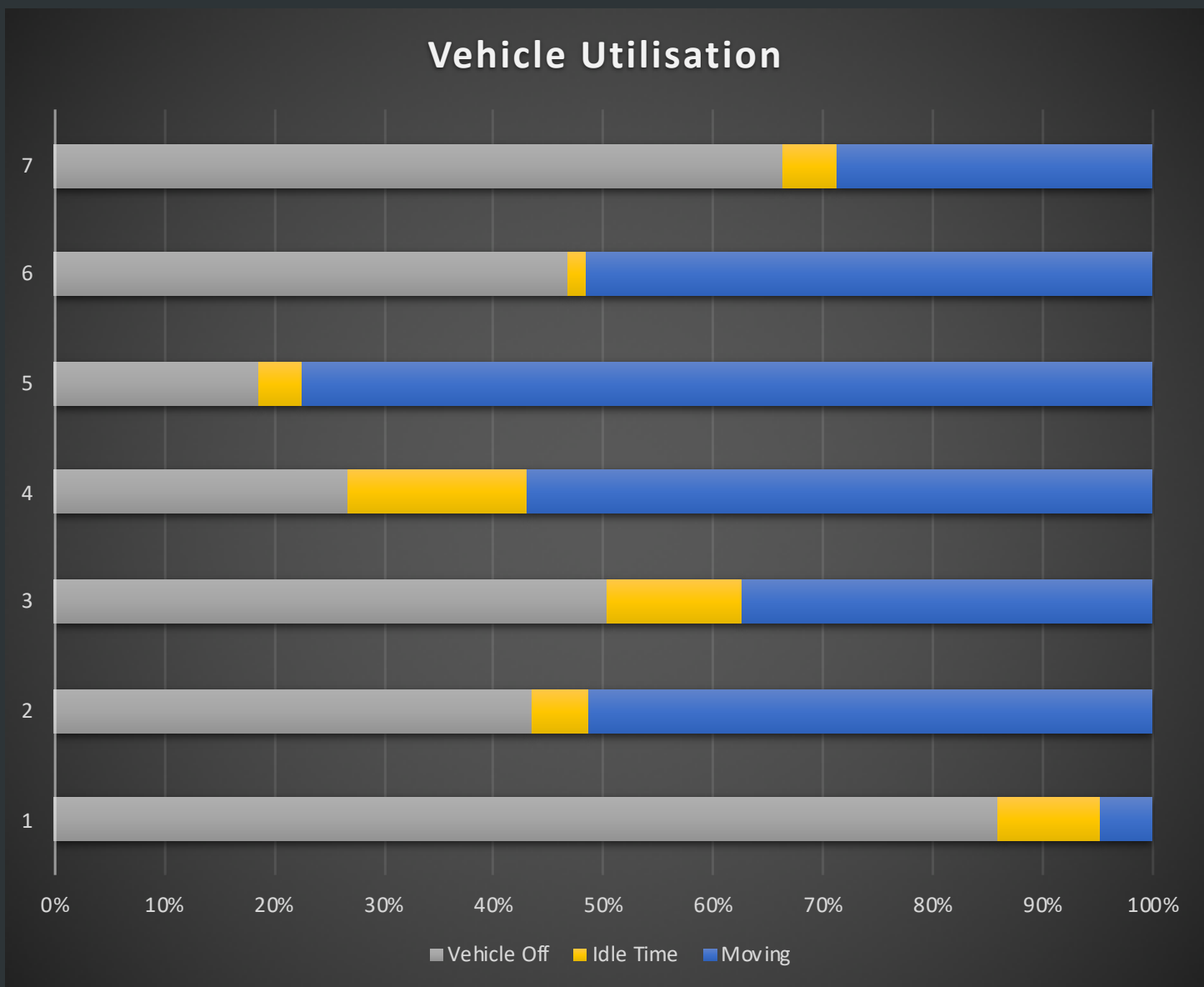
World Map

Directly display point, line, polygon from PostGIS (+ GeoJSON)



Horizontal Charts

100% Stacked Line
Sparkline
Gantt Chart



Realtime Map Tracking

Kafka / MQTT datasource
Live updates

Infrastructure Components - What we're currently looking into

Postgres / POGIS

MS SQL Server

Custom Messaging
Protocols

Custom Message Queue

Kafka / Apache Spark

Prometheus / Influx /
Alerting Engine

Data Retrieval and
Storage for deep analysis

Message Queues
Data Aggregation and Caching

Alerting and Anomaly Detection

HBase / Hadoop...



Thank You

James Wetherall

Group Manager, Emergency Services

james.wetherall@trapezgroup.com.au

